

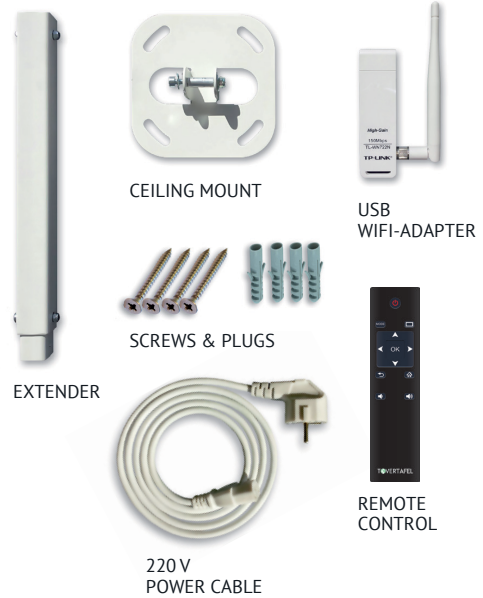
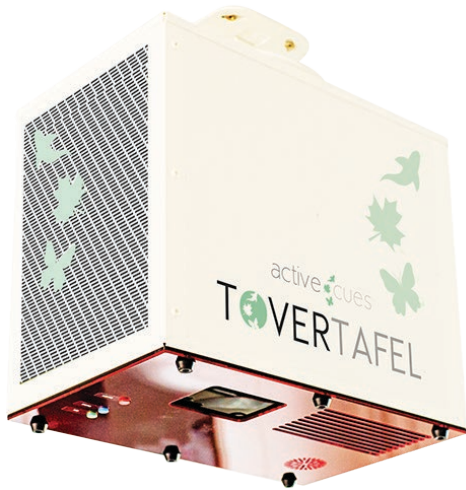
Tovertafel

Risk Review

tovertafel@leef.com.au

leef.
innovation

TOVERTAFEL | Risk Assessment



The Tovertafel Unit

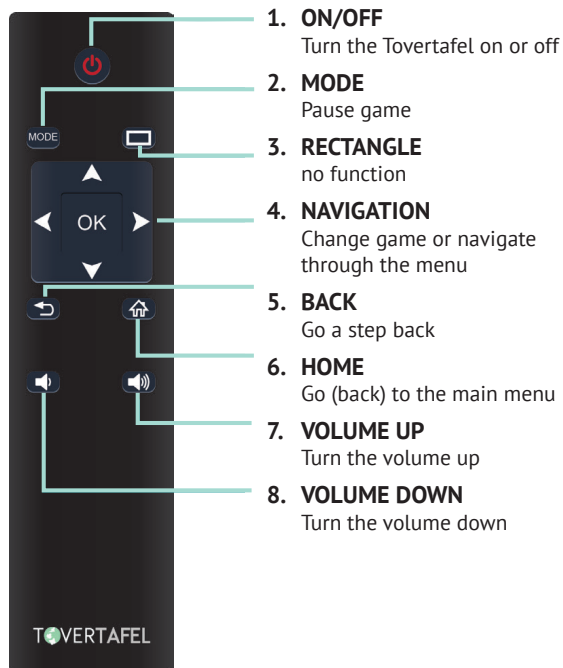
- The Unit is delivered to the purchasing premises in a cardboard box and packaging.
- The Unit will not have been handled for a period of at least 2 weeks.
- The box will have been opened and visually checked to ensure all components are included.

Risk Control Measures:

- The person performing this check will be wearing single use gloves.
- On arrival at the facility destination the unit will be installed by installers arranged by the facility.
- The Unit will be mounted on the ceiling out of reach – therefore poses no contamination or cross contamination risk.

TOVERTAFEL | Operating the Tovertafel

Tovertafel Remote



Operating the Tovertafel

The Tovertafel is operated by use of a hand held remote control – this is the only part of the equipment that will be handled.

Risk Control measures:

- The person operating the hand held remote should use hand sanitiser before use.
- Use hand sanitiser after use.
- Wipe the remote control with Alcohol wipes (those designed for use on electronic equipment).

Risk Control Measures:

- Select only residents not showing signs of illness to play. Contactless thermometer screening recommended.
- Adhere to social distancing guidelines at all times in selecting seating positioning or standing locations if standing.
- Use appropriate cleaning agents to wipe table and chairs before bringing residents to the location.
- Use appropriate cleaning agents after each session and each time a resident leaves the location and before the next player is added..
- Ensure each participant uses hand sanitiser before commencing play.

There is the option to play the activity on the floor instead of a table. The playing surface is bigger on the floor, participants can sit in chairs placed at appropriate intervals and as long as they are safe to do so can use their feet to manipulate the projected images instead of hands.

General:

We encourage vigilance in supervising the personal hygiene and cleaning of all surfaces contacted by residents and staff involved in any activities, noting that with Tovertafel, surfaces being the table and furniture are relatively easy to thoroughly wipe down and sanitise. Particular care should be taken to protect and clean the remote control by the staff member in charge